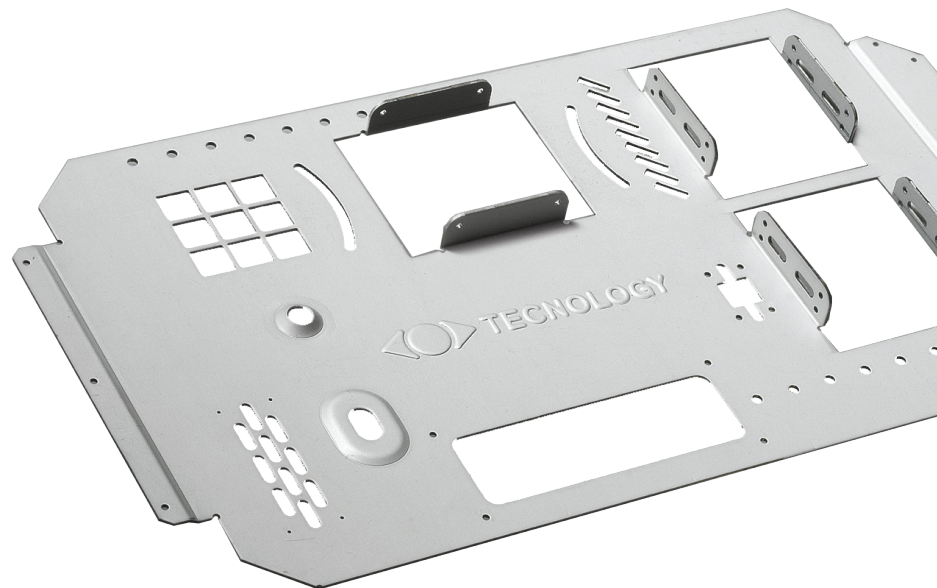




TECNOLOGY



TECNOPUNCH
Omega Series

THE AUTOMATIC PUNCHING MACHINE OF NEW GENERATION



●
AUTOMATIC

●
ACCESSIBLE

●
EFFICIENT

●
VERSATILE

●
LOW
CONSUMPTION

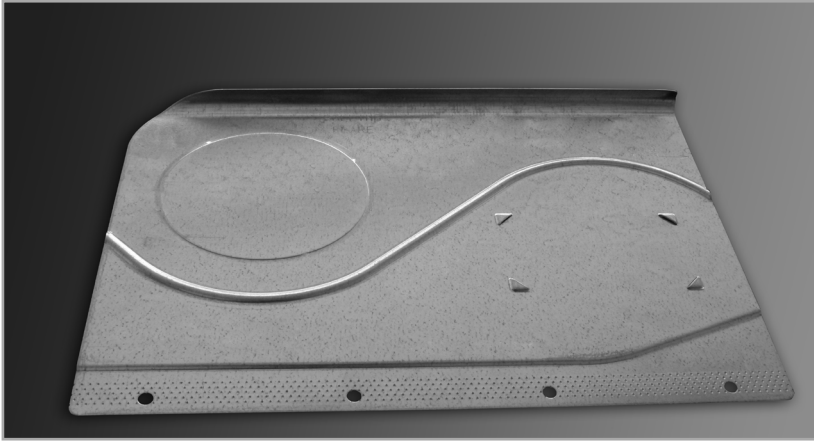
TECHNOLOGY, making use of over 38 years of experience and more than 1300 machines installed worldwide, pursues the target of the total satisfaction of its customers through the high quality of the machines, achieved through continuous technological research of innovative and reliable solutions, and through a complete and effective after-sales service. All the TECHNOLOGY machines are rigorously Made in Italy

■ TP 355

Model to work 1250mm x 2500mm (4' x 8') sheet format with one repositioning

■ TP 366

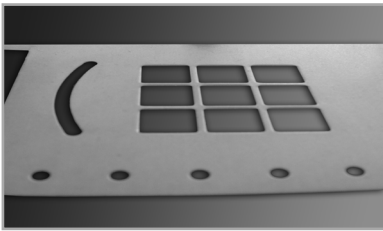
Model to work 1500mm x 3000mm (5' x 10') sheet format with one repositioning



HIGH SPEED FORMING

Included CNC function for Mate roller ball and Wilson wheel using.

- Rolling Offset
(Wilson Wheel Family)
- Rolling Rib
(Wilson Wheel Family)
- Rolling Shear
(Wilson Wheel Family)



Punching Accuracy



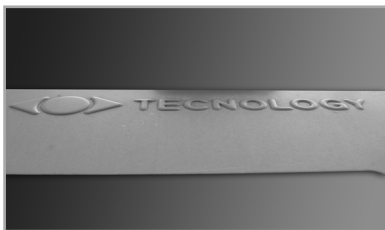
Fine Contouring Process



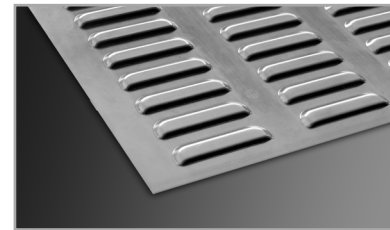
Coining



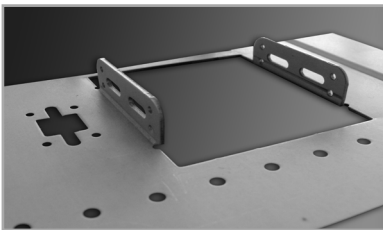
Forming



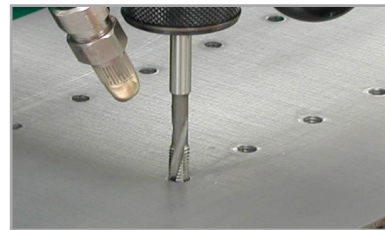
Marking



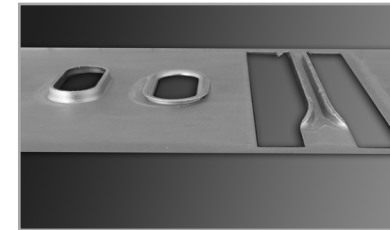
Forming



Bending



Tapping



Special Forming



TECHNOLOGY Tools Style

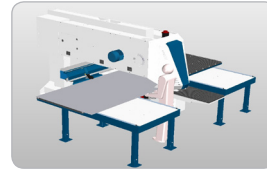
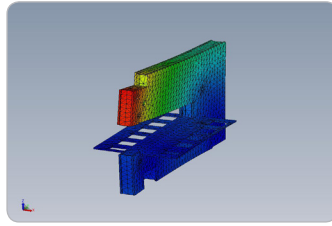


Standard Tools TRUMPF Style

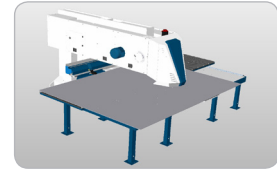
OUR TECHNOLOGIES

THE "C" FRAME

High versatility and accessibility to the machine.



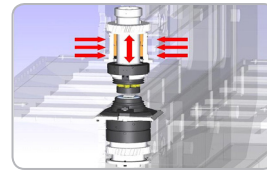
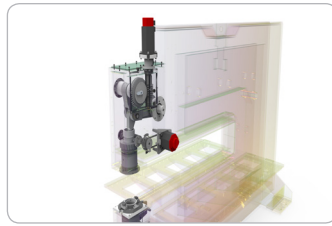
Front load the sheet metal



Processing of larger sheet metal

PUNCHING UNITS

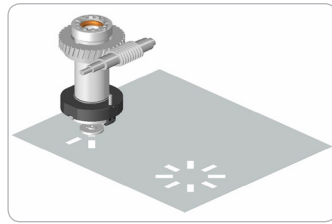
Advanced punching system with low power consumption



Punches guide 140 mm high for the best quality in processing

AUTO-INDEX SYSTEM

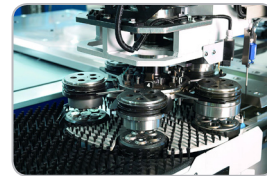
Allows for orientation from 0° to 360° of all tools making the machine highly flexible.



Orientation from 0° to 360° for single tools inside the Multitool. Valid only for TRUMPF tools

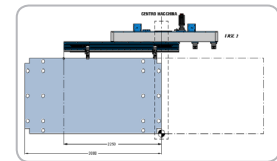
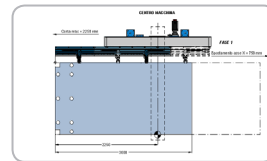
TOOL CHANGES

Innovative tool change turret with 5 seats.



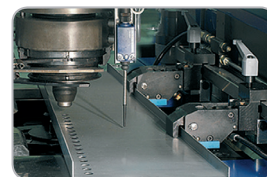
REPOSITIONING SYSTEM

Thanks to this system, you have the possibility to work sheet larger format than X-Axis. Our system allows more of one repositioning during production.



SHEET METAL LOCKING CLAMPS

Clamps have adjustable clamping system. Thanks to their shape you can work sheets with pre-folded edges.



THE NEXT GENERATION OF TOOL CHANGES

Number Stations	Dimension of Tools	Type (Single Tool) (Multitool 5/10 stations)	Type Stations
Stations 1	from ø1 to ø76,2 mm	single tools o multitool	index
Stations 2	from ø1 to ø76,2 mm	single tools o multitool	index
Stations 3	from ø1 to ø76,2 mm	single tools o multitool	index
Stations 4	from ø1 to ø76,2 mm	single tools o multitool	index
Stations 5	from ø1 to ø76,2 mm	single tools o multitool	index

N.B.: with TECHNOLOGY punches use maximum diameter is 100 mm



- FLEXIBLE**
 all stations are auto-indexed and are completely configurable by the operator
- FAST**
 setup time of the machine extremely reduced

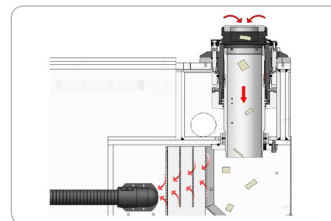
THANKS TO TECHNOLOGY SYSTEM CAN BE INSTALLED UP TO 50 TOOLS

HEAVY DUTY BRUSH TABLE



For material thickness up to 6,4mm (0.25"), the machine can be delivered in brush table and metal balls

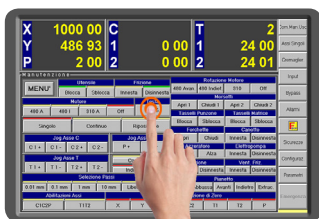
VACUUM SYSTEM



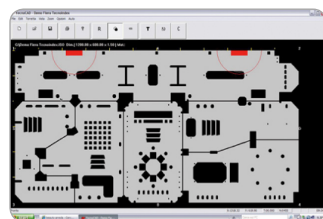
Scraps vacuum system guarantees a correct evacuation from the matrix.

PROGRAMMING SOFTWARE TECNOCAM WITH TOUCH INTERFACE TECNOCONTROL

To program on the machine, easy, fast and intuitive thanks to the help of graphics. Tecnocam is part of TECNOCONTROL interface and is installed in the machine console.



TECNOCONTROL Interface



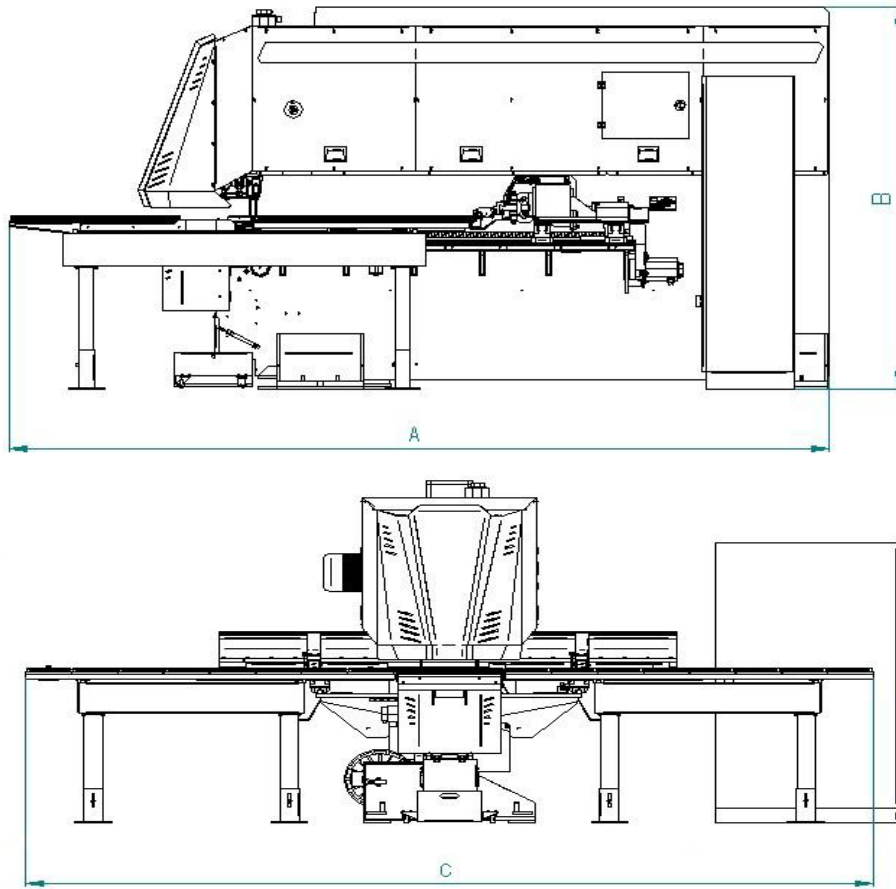
TECNOCAM

OFFLINE SOFTWARE CAD / CAM

Allows an advanced and fast programming, thanks to the possibility to import DWG and DXF files.

TECHNOLOGY machines can be equipped with CAD / CAM software:

- JETCAM
- ALMA
- LANTEK
- METALIX



MACHINE	TP 355	TP 366
Tonnage	30 metric / 33 U.S.	
Maximum Thickness	3.2 mm / 0.12" (standard brush table) 6.4 mm / 0.25" (brush table and metal balls - OPTIONAL)	
Work Size (w/o reposition)	1250 mm x 1250 mm	1500 mm x 2500 mm
Maximum Feed Rate	X axis: 90 m per min. / 3,150" per min. • Y axis: 65 m per min. / 2,362" per min.	
Maximum Weight of Material	150 Kg / 331 lbs.	
Maximum Hit Rate	X Axis 310 HPM • (on 1" pitch) 600 HPM (at 0.019" pitch)	X Axis 310 HPM • (on 1" pitch) 600 HPM (at 0.019" pitch)
Punching Accuracy	± 0.1 mm / 0.004"	
Auto-Index Rotation Speed	60 rpm	
Minimum Programmable Positioning	0,01 gradi	
NC Control	FANUC 31 IPB	
Power Requirement	12,5 kVA	
Depth (A)	4690 mm / 185"	4900 mm / 185"
Height (B)	2450 mm / 97"	2320 mm / 97"
Width (C)	2690 mm / 106"	3190 mm / 125"
Mass Of Machine	9.5 metric tons / 20,945 lbs.	13.0 metric tons / 28,660 lbs.

MADE IN ITALY

